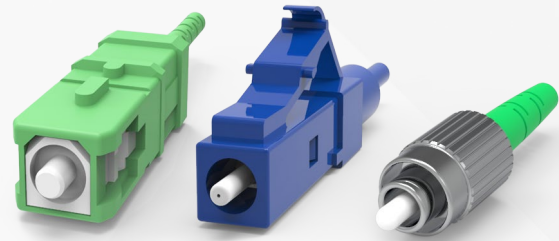


Attenuators

DMSI offers a full line of in-line attenuators available in FC, SC, and LC connector types for use in any application. Our attenuators can be installed easily and are constructed of the highest quality materials. Each of our fiber optic attenuators are individually tested and are offered in a wide variety of connector styles and polish types. Available in all dB types.



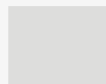
In-line attenuators are used in fiber optic communications to reduce the optical fiber power at a certain level. The most commonly used type is a female to male plug. The commonly used attenuation range is from 1dB to 25dB.

SPECIFICATIONS

Product Type	Attenuators
Return Loss	≥ 55dB (UPC) / ≥65dB (APC)
Attenuation Tolerance	1 to 10dB: ±0.5, 11 to 20dB ±10%
Operational Wavelength	1310 ± 40nm, 1490 ± 20nm, 1550 ± 40nm
Operating Temperature	-40°C to +75°C
Maximum Power	500mw
Connector Type	LC / LC/APC / SC / SC/APC / FC / FC/APC
Color	Blue / Green / Metal

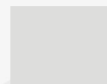
PART NUMBER CONFIGURATOR

ATT -



AA

Y -



BB

AA	Select Connector
21	FC/UPC (metal body)
28	FC/APC (metal body)
31	LC/UPC (blue)
38	LC/APC (green)
61	SC/UPC (blue)
68	SC/APC (green)

Y	Single-mode OS2
BB	Select dB
	01 to 25