



# PRODUCT INFORMATION

## OMNIA-RA Enclosures

### Classic Rack Mount

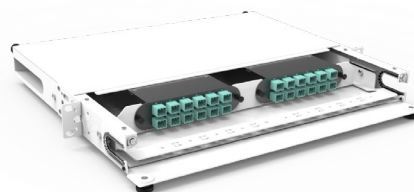
OMNIA-RA Enclosure Series offers a light weight yet durable option for our customers. It is a user friendly, aesthetically pleasing alternative to our previous model that is sure to be a great solution for our customer's connectivity needs.

#### Features

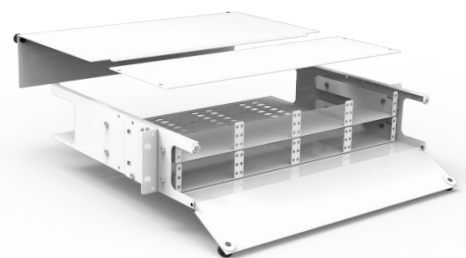
- The Enclosure's **Reduced Depth and Aluminum Body** provide for light weight, one-man installations and costs less to ship
- The **Riveted Piano Hinge** ensures durable, long-lasting Front Door action without the hassle of extra hardware.
- The stylish **Slide Tray and Cable Management Bar** are now manufactured out of one piece of metal for ease of use and again requires less hardware.
- Two attractive **Door Knobs with Magnetic Catches** provide an aesthetically pleasing appearance while making it simple for the user to open and close the Front Door.
- The **new Rear Door** offers easy removal with a unique Dual Plunger Design.
- An attached **Rear Cable Management Plate** requires less hardware and is less expensive to manufacture.
- The **Pure White Paint Color** gives the Enclosure a clean professional appearance.

#### Ordering Information

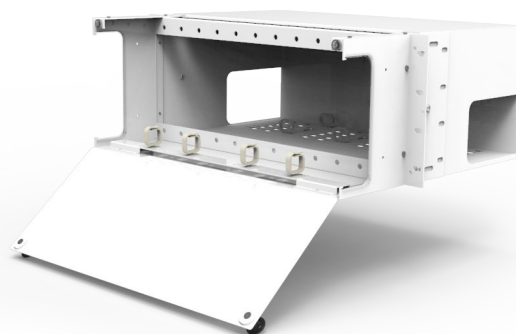
Part Number	Description
OMNIA1C-RA	OMNIA-RA Enclosure, 1RU, Classic, 2 panel or module capacity, sliding tray, rear cable management plate, includes compliant cable routers and holders
OMNIA2C-RA	OMNIA-RA Enclosure, 2RU, Classic, 4 panel or module capacity, sliding tray, rear cable management plate, includes compliant cable routers and holders
OMNIA4C-RA	OMNIA-RA Enclosure, 4RU, Classic, 12 panel or module capacity, rear cable management plate, includes compliant cable routers and holders



OMNIA-RA 1U



OMNIA-RA 2U



OMNIA-RA 4U

To order or for more info, please contact our sales team:

Call: +1 (941) 244-0935

Email: [info@dmsimfg.com](mailto:info@dmsimfg.com)



COVERED BY U.S. PATENT NO. 10,191,238

[www.dmsimfg.com](http://www.dmsimfg.com)

All Rights Reserved. March 19, 2019