



# PRODUCT INFORMATION

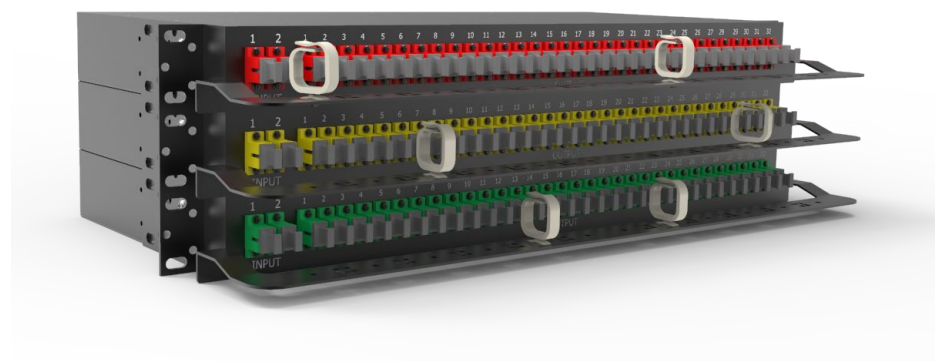
## PLC Splitter Rack Mount Type

Secure Solutions Color-coded & Non-Keyed

### Technical Specifications (Connectorized)

Item	1x2	1x4	1x8	1x16	1x32	1x64	1x128
Fiber Type	G.657.A						
Working Wavelength	1260nm~1650nm						
Standard Insertion Loss (dB)	≤4.2	≤7.6	≤10.7	≤14.0	≤17.2	≤20.8	≤24.0
P- Grade Insertion Loss (dB)	≤4.0	≤7.4	≤10.5	≤13.8	≤17.0	≤20.4	≤23.7
Uniformity (dB)	≤0.6	≤0.8	≤0.8	≤1.0	≤1.5	≤2.0	≤2.0
PDL (dB)	≤0.2	≤0.2	≤0.3	≤0.3	≤0.3	≤0.4	≤0.5
Wavelength Dependent Loss (dB)	≤0.6	≤0.8	≤0.8	≤1.0	≤1.5	≤2.0	≤2.0
Return Loss (dB)	≥50						
Directivity (dB)	≥55						
Operating Temperature Range	-40°C~ +85°C						

Item	2x2	2x4	2x8	2x16	2x32	2x64	2x128
Fiber Type	G.657.A						
Working Wavelength	1260nm~1650nm						
Standard Insertion Loss (dB)	≤4.4	≤8.0	≤11.0	≤14.6	≤17.8	≤21.0	≤24.4
P- Grade Insertion Loss (dB)	≤4.2	≤7.7	≤10.8	≤14.1	≤17.4	≤20.7	≤24.0
Uniformity (dB)	≤0.8	≤1.0	≤1.2	≤1.5	≤1.8	≤2.0	≤3.0
PDL (dB)	≤0.2	≤0.2	≤0.3	≤0.3	≤0.3	≤0.4	≤0.5
Wavelength Dependent Loss (dB)	≤0.8	≤1.0	≤1.2	≤1.5	≤1.8	≤2.0	≤3.0
Return Loss (dB)	≥50						
Directivity (dB)	≥55						
Operating Temperature Range	-40°C~ +85°C						



To order or for more info,  
please contact our sales  
team:

Call: +1 (941) 244-0935  
Email: info@dmsimfg.com





# PRODUCT INFORMATION

## PLC Splitter Rack Mount Type

Secure Solutions Color-coded & Non-Keyed

### Technical Specifications (Without Connectors)

Item	1x2	1x4	1x8	1x16	1x32	1x64	1x128
Fiber Type	G.657.A						
Working Wavelength	1260nm~1650nm						
Standard Insertion Loss (dB)	≤4.0	≤7.4	≤10.5	≤13.8	≤17.0	≤20.6	≤23.8
P- Grade Insertion Loss (dB)	≤3.8	≤7.2	≤10.3	≤13.6	≤16.8	≤20.2	≤23.5
Uniformity (dB)	≤0.6	≤0.8	≤0.8	≤1.0	≤1.5	≤2.0	≤2.0
PDL (dB)	≤0.2	≤0.2	≤0.3	≤0.3	≤0.3	≤0.4	≤0.5
Wavelength Dependent Loss (dB)	≤0.6	≤0.8	≤0.8	≤1.0	≤1.5	≤2.0	≤2.0
Return Loss (dB)	≥50						
Directivity (dB)	≥55						
Operating Temperature Range	-40°C~ +85°C						

Item	2x2	2x4	2x8	2x16	2x32	2x64	2x128
Fiber Type	G.657.A						
Working Wavelength	1260nm~1650nm						
Standard Insertion Loss (dB)	≤4.2	≤7.8	≤10.8	≤14.4	≤17.6	≤20.8	≤24.2
P- Grade Insertion Loss (dB)	≤4.0	≤7.5	≤10.6	≤13.9	≤17.2	≤20.5	≤23.8
Uniformity (dB)	≤0.8	≤1.0	≤1.2	≤1.5	≤1.8	≤2.0	≤3.0
PDL (dB)	≤0.2	≤0.2	≤0.3	≤0.3	≤0.3	≤0.4	≤0.5
Wavelength Dependent Loss (dB)	≤0.8	≤1.0	≤1.2	≤1.5	≤1.8	≤2.0	≤3.0
Return Loss (dB)	≥50						
Directivity (dB)	≥55						
Operating Temperature Range	-40°C~ +85°C						

### Packaging

Item	1x2	1x4	1x8	1x16	1x32	1x64
Length x Width x Height (mm)	482x160x44.5					482x160x89
Item	2x2	2x4	2x8	2x16	2x32	2x64
Length x Width x Height (mm)	482x160x44.5					482x160x89

To order or for more info, please contact our sales team:

Call: +1 (941) 244-0935  
Email: info@dmsimfg.com



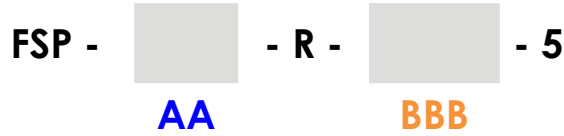


PRODUCT INFORMATION

# PLC Splitter Rack Mount Type

Secure Solutions Color-coded & Non-Keyed

## Part Number Configurator



AA	Select Connector
B5	SC/APC Blue
N5	SC/APC Orange
G5	SC/APC Green
W5	SC/APC Brown
T5	SC/APC Slate
H5	SC/APC White
R5	SC/APC Red
K5	SC/APC Black
Y5	SC/APC Yellow
V5	SC/APC Violet
S5	SC/APC Rose
A5	SC/APC Aqua
L5	SC/APC Lime Green
B9	LC/APC Blue
N9	LC/APC Orange
G9	LC/APC Green
W9	LC/APC Brown
T9	LC/APC Slate
H9	LC/APC White
R9	LC/APC Red
K9	LC/APC Black
Y9	LC/APC Yellow
V9	LC/APC Violet
S9	LC/APC Rose
A9	LC/APC Aqua
L9	LC/APC Lime Green

AA	Select Connector
6B	SC Simplex (Internally Shuttered) Blue
6N	SC Simplex (Internally Shuttered) Orange
6G	SC Simplex (Internally Shuttered) Green
6W	SC Simplex (Internally Shuttered) Brown
6T	SC Simplex (Internally Shuttered) Slate
6H	SC Simplex (Internally Shuttered) White
6R	SC Simplex (Internally Shuttered) Red
6K	SC Simplex (Internally Shuttered) Black
6Y	SC Simplex (Internally Shuttered) Yellow
6V	SC Simplex (Internally Shuttered) Violet
6S	SC Simplex (Internally Shuttered) Rose
6A	SC Simplex (Internally Shuttered) Aqua
6L	SC Simplex (Internally Shuttered) Lime Green

BBB	Select Split
1x2	1 x 2
1x4	1 x 4
1x8	1 x 8
116	1 x 16
132	1 x 32
164	1 x 64
2x2	2 x 2
2x8	2 x 8
216	2 x 16
232	2 x 32
264	2 x 64
5	50/50 Even - Standard Split Ratio

To order or for more info, please contact our sales team:

Call: +1 (941) 244-0935  
 Email: info@dmsimfg.com

