



PRODUCT INFORMATION

MTP® Trunks

Secure Solutions Color-coded & Non-Keyed

Secure Solutions MTP® trunks feature color coded and non-keyed MTP® brand connectors with a matching outer jacket color micro 250 reduced diameter cable. Connectors are available in single-mode and multimode fiber options.

Jacket ratings are available in Plenum (OFNP), Riser (OFNR), and LSZH.

Features

- Highly customizable to user preference
- Custom color jackets, connectors, and furcation legs

Connector Performance Specifications

CONNECTOR TYPE	TYPICAL IL PERFORMANCE	MAX IL PERFORMANCE	RETURN LOSS
Single-mode MTP®	0.25 dB	0.75 dB	≥-60 dB
Single-mode MTP® (Low Loss)	0.10 dB	0.15 dB	≥-20 dB
Multimode MTP®	0.20 dB	0.55 dB	≥-20 dB
Multimode MTP® (Low Loss)	0.10 dB	0.15 dB	≥-20 dB

Connector Compliances

- MPO (including MTP®), TIA/EIA-604-5

MPO COMPLIANCES

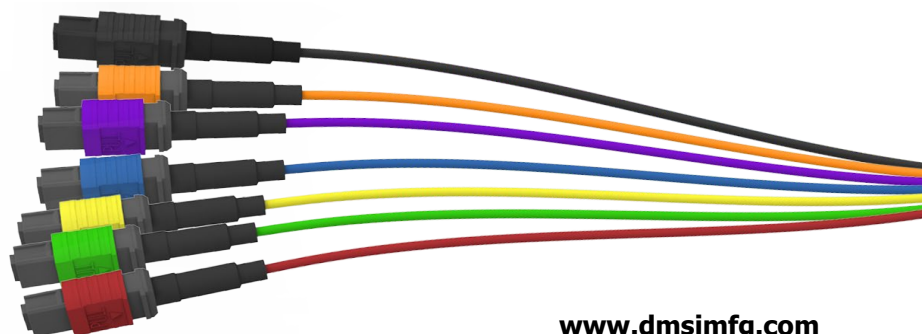
- Meets IEC Standard 61754-7
- Structured cabling per TIA-568-C
- Parallel Optics
- Optical Internetworking Forum (OIF) Compliant
- Infiniband Compliant
- 10G Fiber Channel Compliant
- 40G and 100G IEEE 802.3
- SNAP 12
- POP 4
- QSFP
- CXP

Product Specifications

Product Type	Secure Solutions MTP®/MPO Trunks
Fiber Category	Single-mode OS2 / 62.5µm Multimode OM1 / 50µm Multimode OM3 / OM4 / OM5
Fiber Count	12F - 144F
Connector Type	MTP®/MPO
Colors Available	Blue / Orange / Green / Brown / Slate / White / Red / Black / Yellow / Violet / Rose / Aqua / Lime Green

To order or for more info, please contact our sales team:

Call: +1 (941) 244-0935
Email: info@dmsimfg.com





PRODUCT INFORMATION

MTP[®] Trunks

Secure Solutions Color-coded & Non-Keyed

Standard and Compliances

Single-mode OS2

The standard single-mode offering is a 10mm OS2 bend insensitive fiber. Bend performances of 7.5mm and 5.0mm are also available.

COMPLIANCES

- ICEA S-83-596 UL1666
- TIA492-CAAB
- TIA-568-C.3
- TIA-568-D

NUMERICAL APERTURE

- .14 (characterized)

AVAILABLE FIBER TYPES

- Corning[®] SMF-28[®] Ultra optical fiber compliant to G.657.A1, 10mm BR
- Corning[®] ClearCurve[®] LBL optical fiber compliant to G.657.A2/B2, 7.5mm BR
- Corning[®] ClearCurve[®] ZBL optical fiber compliant to G.657.B3, 5mm BR

Multimode 62.5µm OM1

COMPLIANCES

- ICEA S-83-596 UL1666
- TIA492-AAAA-A
- TIA-568-C.3
- TIA-568-D
- ISO/IEC 11801 Type OM1
- IEC 60793-10 UL1666

NUMERICAL APERTURE

- .275 ± 0.015

AVAILABLE FIBER TYPES

- 62.5µm OM1 (standard offering for OMNIA[®] and IllumiCore[®])

Multimode 50µm OM3 / OM4 / OM5

COMPLIANCES

- ICEA S-83-596 UL1666
- TIA-568-C.3
- TIA-568-D
- IEC 60793-10 UL1666

NUMERICAL APERTURE

- .20 ± 0.015

AVAILABLE FIBER TYPES (7.5mm Bend Radius)

- Corning[®] ClearCurve[®] OM3 optical fiber compliant to TIA492-AAAC-B, A1a.2 to IEC60793-2-10
- Corning[®] ClearCurve[®] OM4 optical fiber compliant to TIA492-AAAD, A1a.3 to IEC60793-2-10
- Corning[®] ClearCurve[®] OM5 optical fiber compliant to TIA492-AAAE, A1-OM5 to IEC60793-2-10

To order or for more info,
please contact our sales
team:

Call: +1 (941) 244-0935

Email: info@dmsimfg.com





PRODUCT INFORMATION
MTP® Trunks
 Secure Solutions Color-coded & Non-Keyed

Part Number Configurator



A	Select Connector Color
B	Blue
N	Orange
G	Green
W	Brown
T	Slate
H	White
R	Red
K	Black
Y	Yellow
V	Violet
S	Rose
A	Aqua
L	Lime Green

B	Select Connector
F	MTP®/MPO Non-pinned
M	MTP®/MPO Pinned
A	Connector Color Selected
B	Select Connector
F	MTP®/MPO Non-pinned
M	MTP®/MPO Pinned
CCC	Select Fiber Count
012	12F
024	24F
036	36F
048	48F
072	72F
144	144F

D	Select Fiber Type
Y	Single-mode OS2
F	OM1
G	OM3
M	OM4
W	OM5 (WBMMF)
E	Select Polarity Type
A	Type A
B	Type B
C	Type C
A	Cable Color Selected
F	Select Jacket Rating
2	Indoor, OFNP (Plenum)
9	Indoor, OFNR (Riser)
Z	Indoor, LSZH
GGG	Select Trunk Length (Feet)
001 - 999	
F	Feet

To order or for more info,
 please contact our sales
 team:

Call: +1 (941) 244-0935
 Email: info@dmsimfg.com

