



PRODUCT INFORMATION

MDC Pre-Terminated MTP® Shelf

This is a cost effective pre-terminated MTP® solution for quick deployments. Enclosure is pre-terminated with MTP® pinned connectors in the back and MDC connectors on the front.

MDC connectors are installed and removed using a push-pull strain relief boot. The boot assists in very dense applications providing easy extraction from adapters and ports. Polarity is easily changed without the need of a tool, or exposing fibers, by simply pulling back the strain relief and rotating around the connector body.

Enclosures are highly configurable. Please contact sales for part numbers and detailed drawings.

Connector Performance Specifications

CONNECTOR TYPE	TYPICAL IL PERFORMANCE	MAX IL PERFORMANCE	RETURN LOSS
Single-mode MDC	≤0.07 dB	≤0.15 dB	≥-20 dB
Single-mode MTP®	0.25 dB	0.75 dB	≥-60 dB
Single-mode MTP® (Low Loss)	0.10 dB	0.15 dB	≥-20 dB
Multimode MDC	≤0.07 dB	≤0.15 dB	≥-20 dB
Multimode MTP®	0.20 dB	0.55 dB	≥-20 dB
Multimode MTP® (Low Loss)	0.10 dB	0.15 dB	≥-20 dB

Connector Compliances

- MPO (including MTP®), TIA/EIA-604-5

MDC COMPLIANCES

- Telecordia GR-326
- TIA-568
- Meets IEC-61753-1 Grade B IL requirements

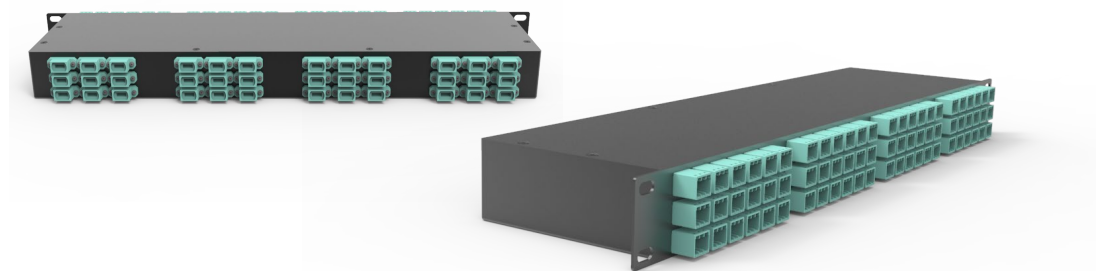
MPO COMPLIANCES

- Meets IEC Standard 61754-7
- Structured cabling per TIA-568-C
- Parallel Optics
- Optical Internetworking Forum (OIF) Compliant
- Infiniband Compliant
- 10G Fiber Channel Compliant
- 40G and 100G IEEE 802.3
- SNAP 12
- POP 4
- QSFP
- CXP

COMPONENTS RATED UL94 V-0

Product Specifications

Product Type	Pre-Terminated MDC-MTP® Shelf
Fiber Category	Single-mode OS2 / 62.5µm Multimode OM1 / 50µm Multimode OM3 / OM4 / OM5
Fiber Count	12F to 288F
Adapter Type	MDC3
Polarity Type	Type A, B, C
Adapter Color	Blue / Orange / Green / Brown / Slate / White / Red / Black / Yellow / Violet / Rose / Aqua / Lime Green



To order or for more info, please contact our sales team:

Call: +1 (941) 244-0935
Email: info@dmsimfg.com





PRODUCT INFORMATION

MDC Pre-Terminated MTP® Shelf

Standard and Compliances

Single-mode OS2

The standard single-mode offering is a 10mm OS2 bend insensitive fiber. Bend performances of 7.5mm and 5.0mm are also available.

COMPLIANCES

- ICEA S-83-596 UL1666
- TIA492-CAAB
- TIA-568-C.3
- TIA-568-D

NUMERICAL APERTURE

- .14 (characterized)

AVAILABLE FIBER TYPES

- Corning® SMF-28® Ultra optical fiber compliant to G.657.A1, 10mm BR
- Corning® ClearCurve® LBL optical fiber compliant to G.657.A2/B2, 7.5mm BR
- Corning® ClearCurve® ZBL optical fiber compliant to G.657.B3, 5mm BR

Multimode 62.5µm OM1

COMPLIANCES

- ICEA S-83-596 UL1666
- TIA492-AAAA-A
- TIA-568-C.3
- TIA-568-D
- ISO/IEC 11801 Type OM1
- IEC 60793-10 UL1666

NUMERICAL APERTURE

- $.275 \pm 0.015$

AVAILABLE FIBER TYPES

- 62.5µm OM1 (standard offering for OMNIA® and IllumiCore®)

Multimode 50µm OM3 / OM4 / OM5

COMPLIANCES

- ICEA S-83-596 UL1666
- TIA-568-C.3
- TIA-568-D
- IEC 60793-10 UL1666

NUMERICAL APERTURE

- $.20 \pm 0.015$

AVAILABLE FIBER TYPES (7.5mm Bend Radius)

- Corning® ClearCurve® OM3 optical fiber compliant to TIA492-AAAC-B, A1a.2 to IEC60793-2-10
- Corning® ClearCurve® OM4 optical fiber compliant to TIA492-AAAD, A1a.3 to IEC60793-2-10
- Corning® ClearCurve® OM5 optical fiber compliant to TIA492-AAAE, A1-OM5 to IEC60793-2-10

To order or for more info,
please contact our sales
team:

Call: +1 (941) 244-0935

Email: info@dmsimfg.com



www.dmsimfg.com

All Rights Reserved. March 19, 2019



PRODUCT INFORMATION

MDC Pre-Terminated MTP® Shelf

Part Number Configurator

FRM- - 0346
AAA **B**

AAA Select Fiber Count

036 - 288

B Select Fiber

Y Single-mode OS2

F 62.5µm Multimode OM1

E 50µm Multimode OM2

G 50µm Multimode OM3

M 50µm Multimode OM4

03 MDC3

46 Standard for Low Loss MTP®
Pinned

To order or for more info,
please contact our sales
team:

Call: +1 (941) 244-0935

Email: info@dmsimfg.com

