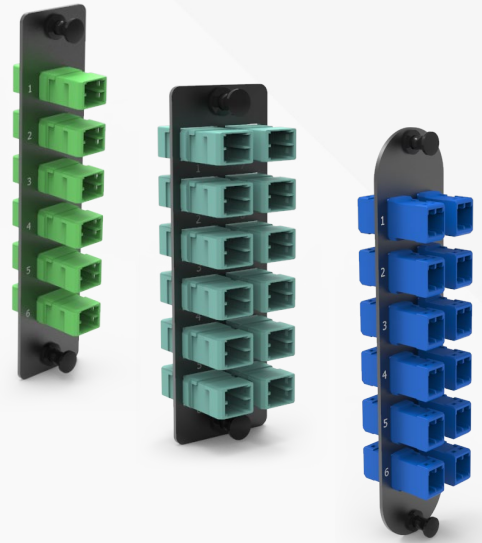


# Adapter Panels MDC

Using the existing families of Classic, PRM, and LGX compatible panels or modules allow end users to upgrade in fiber density without the added cost of buying a new hardware enclosure or system. Simply swap out the existing panel or module to an MDC and plug in the additional fibers required.

Panels use an MDC adapter to accept a jumper or pre-terminated trunk on each side of the panel, up to 48 fiber per Classic panel.



## SPECIFICATIONS

<b>Product Type</b>	Adapter Panel (MDC2 Adapters)
<b>Fiber Category</b>	Single-mode OS2 / 62.5µm Multimode OM1 / 50µm Multimode OM3 / OM4 / OM5
<b>Fiber Count</b>	24F / 36F / 48F
<b>Adapter Type</b>	MDC2
<b>Color</b>	Blue / Orange / Green / Brown / Slate / White / Red / Black / Yellow / Violet / Rose / Aqua / Lime Green

# Adapter Panels MDC



www.dmsimfg.com

## PART NUMBER CONFIGURATOR

DMAP  -   - 02

**A**                      **BB**   **C**                      **D**

A	Select Connectivity
C	Classic
X	LGX Compatible
P	PRM
L	SDX Compatible
BB	Select Fiber Count
24	24F
36	36F
48	48F

C	Select Fiber Type
Y	Single-mode OS2
F	OM1
E	OM2
G	OM3
M	OM4
W	OM5 (WBMMF)
02	MDC2 Adapter

E	Select Adapter Color
B	Blue
N	Orange
G	Green
W	Brown
T	Slate
H	White
R	Red
K	Black
Y	Yellow
V	Violet
S	Rose
A	Aqua
L	Lime Green

