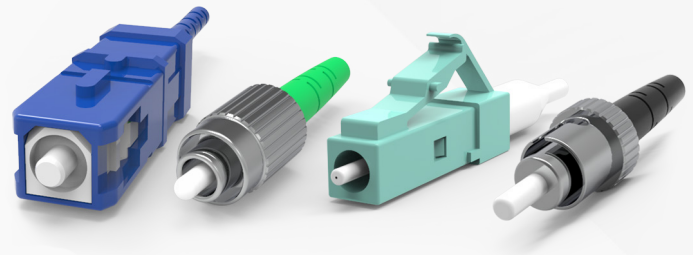


Fiber Connectors

Anaerobic connectors are available for factory or field termination applications. They use a two-part epoxy and require a polish. Available connector types include LC, SC, ST, and FC. Each connector is individually bagged with body and ferrule, crimps, and multiple sized boots.



SPECIFICATIONS

Product Type	Fiber Connector
Fiber Category	Single-mode OS2 / 62.5µm Multimode OM1 / 50µm Multimode OM3 / OM4 / OM5
Connector Type	LC / SC / FC / ST
Connector Color	Aqua / Beige / Blue / Green / Metal-Aqua / Metal-Beige / Metal-Black / Metal-Blue / Metal-Green

ORDERING INFORMATION

LC CONNECTORS	
Part #	Description
EPC-Y31-S	LC Connector, UPC, Single-mode OS2, ceramic ferrule, blue body, includes 900µm and 2.0mm blue boot, single pack
EPC-Y38-S	LC Connector, APC, Single-mode OS2, ceramic ferrule, green body, includes 900µm and 2.0mm green boot, single pack
EPC-F31-S	LC Connector, UPC, 62.5µm multimode OM1, ceramic ferrule, beige body, includes 900µm and 2.0mm beige boot, single pack
EPC-E31-S	LC Connector, UPC, 50µm multimode OM2, ceramic ferrule, beige body, includes 900µm and 2.0mm white boot, single pack
EPC-G31-S	LC Connector, UPC, 50µm multimode OM3/4, ceramic ferrule, aqua body, includes 900µm and 2.0mm aqua boot, single pack

Fiber Connectors



ORDERING INFORMATION

SC CONNECTORS	
Part #	Description
EPC-Y61-S	SC Connector, UPC, Single-mode OS2, ceramic ferrule, blue body, includes 900µm and 2.0mm blue boot, single pack
EPC-Y68-S	SC Connector, APC, Single-mode OS2, ceramic ferrule, green body, includes 900µm and 2.0mm green boot, single pack
EPC-F61-S	SC Connector, UPC, 62.5µm multimode OM1, ceramic ferrule, beige body, includes 900µm and 2.0mm beige boot, single pack
EPC-E61-S	SC Connector, UPC, 50µm multimode OM2, ceramic ferrule, beige body, includes 900µm and 2.0mm beige boot, single pack
EPC-G61-S	SC Connector, UPC, 50µm multimode OM3/4, ceramic ferrule, aqua body, includes 900µm and 2.0mm aqua boot, single pack

FC CONNECTORS	
Part #	Description
EPC-Y21-S	FC Connector, UPC, Single-mode OS2, ceramic ferrule & metal body, includes 900µm and 2.0mm blue boot
EPC-Y28-S	FC Connector, APC, Single-mode OS2, ceramic ferrule & metal body, includes 900µm and 2.0mm green boot
EPC-F21-S	FC Connector, UPC, 62.5µm multimode OM1, ceramic ferrule & metal body, in-cludes 900µm and 2.0mm beige boot
EPC-E21-S	FC Connector, UPC, 50µm multimode OM2, ceramic ferrule & metal body, includes 900µm and 2.0mm black boot
EPC-G21-S	FC Connector, UPC, 50µm multimode OM3/4, ceramic ferrule & metal body, in-cludes 900µm and 2.0mm aqua boot

ST CONNECTORS	
Part #	Description
EPC-Y67-S	ST Connector, UPC, Single-mode OS2, ceramic ferrule & metal body, includes 900µm and 2.0mm blue boot
EPC-F67-S	ST Connector, UPC, 62.5µm multimode OM1, ceramic ferrule & metal body, in-cludes 900µm and 2.0mm beige boot
EPC-E67-S	ST Connector, UPC, 50µm multimode OM2, ceramic ferrule & metal body, includes 900µm and 2.0mm black boot
EPC-G67-S	ST Connector, UPC, 50µm multimode OM3/4, ceramic ferrule & metal body, in-cludes 900µm and 2.0mm aqua boot



Fiber Connectors

STANDARD COMPLIANCES

CONNECTOR COMPLIANCES

- LC Connectors TIA/EIA-604-10
- SC Connectors TIA/EIA-604-3
- ST Connectors TIA/EIA-604-2
- FC Connectors TIA/EIA-604-4

CONNECTOR PERFORMANCE SPECIFICATIONS

CONNECTOR TYPE

Single-mode LC
Single-mode SC
Single-mode FC
Single-mode ST
Multimode LC
Multimode SC
Multimode FC
Multimode ST

TYPICAL IL PERFORMANCE

0.13 dB
0.25 dB
0.16 dB
0.14 dB
0.17 dB
0.12 dB
0.10 dB
0.10 dB

TYPICAL REFLECTANCE

-57 dB
-57 dB
-57 dB
-56 dB

