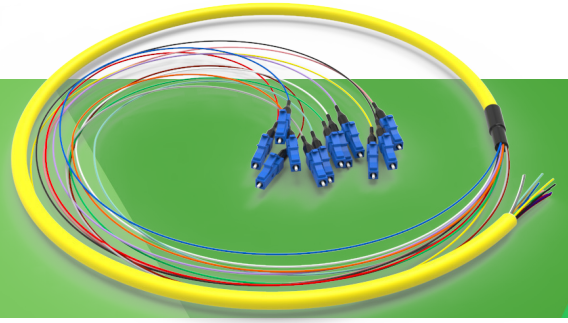


CABLE ASSEMBLIES

Multi-Fiber Trunk Cables & Pigtails



DMSI offers the broadest selection of pre-terminated trunk cables in the industry featured under two product brands: IllumiCore® and OMNIA®. IllumiCore® cables exclusively feature Corning® optical fiber, are made in the USA, and are UL listed. OMNIA® trunks feature all of the high-quality components and performance of IllumiCore® with a unique cable breakout kit for direct integration into OMNIA® enclosures, eliminating the need for cable ties or a tool.

Low loss connector performance and bend insensitive fiber (50µm and Single-mode) are a standard offering for both families.

All cable assemblies are manufactured using component materials that meet the EU RoHS and REACH directive standards. Cables are available in TIA standard or special order colors.

Trunk cable construction types include tight buffer distribution, micro-250, and ribbon in both armored and non-armored constructions. Jacket ratings are available in Plenum (OFNP), Riser (OFNR) and LSZH. Connector types include standard single and two fiber, keyed LC and MTRJ, and a complete offering of secure solutions color coded non-keyed.

TRUNK CABLE FEATURES

- Highly customizable to user preference
- Custom color jackets, connectors, and furcation legs
- Reduced installation time using OMNIA trunks with direct mount breakout kit
- Low loss connector performance is standard with ultra-low loss options available
- UPC and APC polishes, angled and flex boots, push-pull connectors
- 900µm up to 3.0mm furcation legs with staggered or straight breakouts

SINGLE AND DUAL FIBER CONNECTOR COMPLIANCES

- LC Connectors, TIA/EIA-604-10
- SC Connectors, TIA/EIA-604-3
- ST Connectors, TIA/EIA-604-2
- FC Connectors, TIA/EIA-604-4
- MTRJ Connectors, TIA/EIA-604-12

Connector Performance Specifications

	Typical IL Performance (dB)	Max IL Performance (dB)	Typical Reflectance (dB)
Single-mode LC	0.13	0.20	-57
Single-mode ST	0.14	0.20	-56
Single-mode FC	0.16	0.20	-57
Single-mode SC	0.25	0.20	-57
Single-mode MTRJ Pinned	0.25	0.50	-51
Single-mode MTRJ Non-Pinned	0.17	0.50	-51
Multimode LC	0.17	0.20	
Multimode ST	0.10	0.20	
Multimode FC	0.10	0.20	
Multimode SC	0.12	0.20	
Multimode MTRJ Pinned	0.20	0.50	
Multimode MTRJ Non-pinned	0.20	0.50	

Single-mode Jumpers

COMPLIANCES

- ICEA S-83-596 UL1666
- TIA492-CAAB
- TIA-568-C.3

AVAILABLE FIBER TYPES

- Corning® SMF-28® Ultra optical fiber compliant to G.657.A1, 10mm BR
- Corning® ClearCurve® LBL optical fiber compliant to G.657.A2/B2, 7.5mm BR
- Corning® ClearCurve® ZBL optical fiber compliant to G.657.B3, 5mm BR

NUMERICAL APERTURE

- .14 (characterized)

Multimode 62.5µm OM1 Jumpers

The standard single-mode offering is a 10mm OS2 bend insensitive fiber. Bend performances of 7.5mm and 5.0mm are also available.

COMPLIANCES

- ICEA S-83-596 UL1666
- TIA492-AAAA-A
- TIA-568-C.3
- ISO/IEC 11801 Type OM1
- IEC 60793-10 UL1666

NUMERICAL APERTURE

- $.275 \pm 0.015$

AVAILABLE FIBER TYPES

- 62.5µm OM1 (standard offering for OMNIA and Illumi-Core)

Multimode 50µm Jumpers

COMPLIANCES

- ICEA S-83-596 UL1666
- TIA492-AAAA-A
- TIA-568-C.3
- ISO/IEC 11801 Type OM1
- IEC 60793-10 UL1666

NUMERICAL APERTURE

- $.20 \pm 0.015$

AVAILABLE FIBER TYPES

- Corning® ClearCurve® OM3 optical fiber compliant to TIA492-AAAC-B, 7.5mm BR, A1a.2 to IEC60793-2-10
- Corning® ClearCurve® OM4 optical fiber compliant to TIA492-AAAD, 7.5mm BR, A1a.3 to IEC60793-2-10

Multi-Fiber Trunk Cables & Pigtails, ORDERING INFORMATION

(X*)(AA)(BB)(CCC)(D)(E)(F)(G)(H)

(X*) Option for Pull Eye, Use "P" for one end, "B" for both ends, leave blank if not needed.

(AA) & (BB)	Select Connectors
00	Pigtail
21	FC
28	FC/APC
30	LC Simplex
31	LC Duplex
32	LC 2.0mm Simplex
38	LC/APC Duplex
39	LC/APC Simplex
3U	LC Reverse Polarity Uniboot*
P1	LC Push-Pull Uniboot*
60	SC Simplex
61	SC Duplex
62	SC 2.0mm Simplex
65	SC/APC Simplex
68	SC/APC Duplex
67	ST
44	MTRJ Non-pinned
47	MTRJ Pinned
(CCC)	Select Fiber Count
004 to 288	
(D)	Select FiberType
Y	OS2 10mm bend (standard)
L	OS2 7.5mm bend
Z	OS2 5.0mm bend
F	OM1
E	OM2
G	OM3
M	OM4
W	OM5 (WBMMF)**

(E)	Select Cable Construction
T	Tight Buffer Distribution
M	Micro 250 Reduced Diameter
J	Jacketed Ribbon
B	Bare Ribbon (12F only)
L	Dry Loose Tube
(F)	Select Jacket Color
B	Blue
N	Orange
G	Green
W	Brown
T	Slate
H	White
R	Red
K	Black
Y	Yellow
V	Violet
S	Rose
A	Aqua
L	Lime Green
(G)	Select Cable Type
2	Indoor, OFNP (Plenum)
9	Indoor, OFNR (Riser)
Z	Indoor, LSZH
N	Indoor/Outdoor, OFNR (Riser)
T	Indoor/Outdoor, OFNP (Plenum)
A	Indoor, OFCP Armored
R	Indoor, OFCR Armored
U	Indoor/Outdoor OFCR Armored
D	Indoor/Outdoor OFCP Armored
H	Indoor/Outdoor LSZH Non-Armored
S	Indoor/Outdoor LSZH Armored
B	Bare Ribbon (12F Only)
(H)	Select Unit of Measure
F	Feet
M	Meter
N	Inches

*LC Push-Pull and Reverse Polarity Uniboosts are manufactured with 2.0mm legs.

**OM5 standard jacket color is lime green. Other colors are available upon request.

All trunks 100 feet or longer are shipped on a reel with a pull-eye. Standard breakout legs are 900µm color coded for simplex connectors, and 2.0mm for duplex; breakout lengths are:

- 24 inches for fiber counts 36 fiber and less
- 34 inches for fiber counts 48 fiber and higher