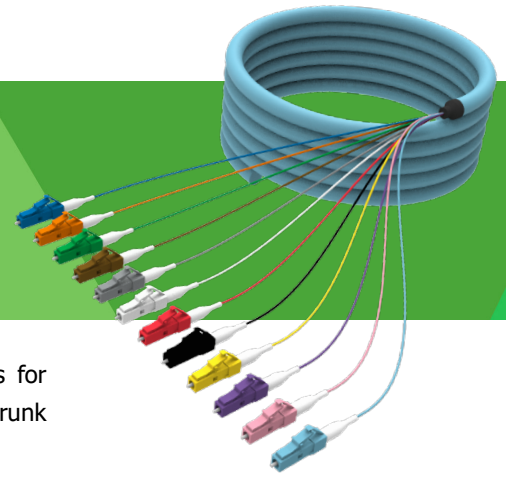


CABLE ASSEMBLIES

Keyed Jumpers and Trunks

--
LC and MTRJ

DMSI offers 13 uniquely keyed and colored LC, MTRJ, and MTP connector options for physical secure network requirements. Keyed products are available in jumpers, trunk cables, harnesses, adapter panels, modules, and work area outlet inserts.



Keyed LC & MTRJ Jumpers, ORDERING INFORMATION

(X)(AA)(BB)002(C)2(D)2(EEE)(F)

(X)	Select Connector Manufacturer
S	Commscope/TE brand
C	Corning brand
D	DMSI brand

(use keyed connector number first)

(AA) & (BB)	Select Connectors
31	LC Duplex
32	LC 2.0mm Simplex
44	MTRJ Non-pinned
47	MTRJ Pinned
61	SC Duplex
62	SC 2.0mm Simplex
3X*	Keyed LC Duplex
4X*	Keyed MTRJ Non-pinned

(X*)	Select Keyed Color Option
B	Blue
N	Orange
G	Green
W	Brown
T	Slate
H	White
R	Red
K	Black
Y	Yellow
V	Violet
S	Rose
A	Aqua

002 - Standard Patch Cord Fiber Count	
(C)	Select FiberType
Y	OS2 10mm bend (standard)
F	OM1
E	OM2
G	OM3
M	OM4
W	OM5 (WBMMF)

2 - Standard plenum jacket	
(D)	Select Jacket Color
B	Blue
N	Orange
G	Green
W	Brown
T	Slate
H	White
R	Red
K	Black
Y	Yellow
V	Violet
S	Rose
A	Aqua
L	Lime Green

2 - Standard plenum jacket	
(EEE)	Select Length

001 - 999	
(F)	Select Unit of Measure
F	Feet
M	Meter
N	Inches

Single-mode Jumpers

COMPLIANCES

- ICEA S-83-596 UL1666
- TIA492-CAAB
- TIA-568-C.3

AVAILABLE FIBER TYPES

- Corning® SMF-28® Ultra optical fiber compliant to G.657.A1, 10mm BR
- Corning® ClearCurve® LBL optical fiber compliant to G.657.A2/B2, 7.5mm BR
- Corning® ClearCurve® ZBL optical fiber compliant to G.657.B3, 5mm BR

NUMERICAL APERTURE

- .14 (characterized)

Multimode 62.5µm OM1 Jumpers

The standard single-mode offering is a 10mm OS2 bend insensitive fiber. Bend performances of 7.5mm and 5.0mm are also available.

COMPLIANCES

- ICEA S-83-596 UL1666
- TIA492-AAAA-A
- TIA-568-C.3
- ISO/IEC 11801 Type OM1
- IEC 60793-10 UL1666

NUMERICAL APERTURE

- $.275 \pm 0.015$

AVAILABLE FIBER TYPES

- 62.5µm OM1 (standard offering for OMNIA and Illumi-Core)

Multimode 50µm Jumpers

COMPLIANCES

- ICEA S-83-596 UL1666
- TIA492-AAAA-A
- TIA-568-C.3
- ISO/IEC 11801 Type OM1
- IEC 60793-10 UL1666

NUMERICAL APERTURE

- $.20 \pm 0.015$

AVAILABLE FIBER TYPES

- Corning® ClearCurve® OM3 optical fiber compliant to TIA492-AAAC-B, 7.5mm BR, A1a.2 to IEC60793-2-10
- Corning® ClearCurve® OM4 optical fiber compliant to TIA492-AAAD, 7.5mm BR, A1a.3 to IEC60793-2-10

Connector Performance Specifications

	Typical IL Performance (dB)	Max IL Performance (dB)	Typical Reflectance (dB)
Single-mode LC	0.13	0.20	-57
Single-mode ST	0.14	0.20	-56
Single-mode FC	0.16	0.20	-57
Single-mode SC	0.25	0.20	-57
Single-mode MTRJ Pinned	0.25	0.50	-51
Single-mode MTRJ Non-Pinned	0.17	0.50	-51
Multimode LC	0.17	0.20	
Multimode ST	0.10	0.20	
Multimode FC	0.10	0.20	
Multimode SC	0.12	0.20	
Multimode MTRJ Pinned	0.20	0.50	
Multimode MTRJ Non-pinned	0.20	0.50	