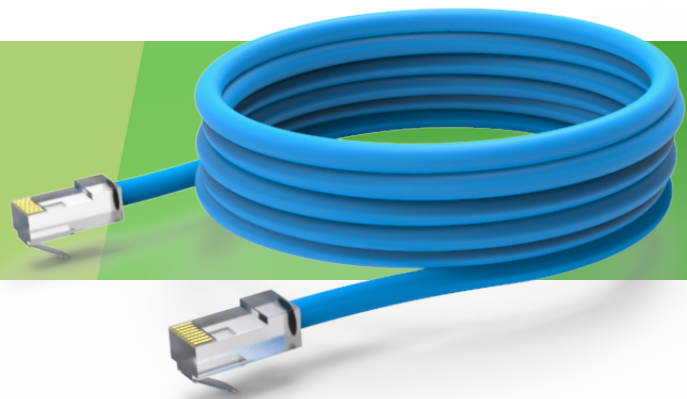


COPPER ASSEMBLIES CAT Patch Cords



CAT Patch Cords, ORDERING INFORMATION

(A)	Replace (A) With Jacket Color
K	Black
B	Blue
T	Slate
Y	Yellow
G	Green
H	White
R	Red
N	Orange
V	Violet

(XXX)	Replace (XXX) with Selected Length
001 - 999	
(B)	Replace (B) Selected Unit of Measure
F	Feet
M	Meters

PLENUM	
Part # (With Boots)	Description
CP5E2(A)WB(XXX)(B)	CAT5E Non-Shielded, Plenum, With Boots
CP5S2(A)WB(XXX)(B)	CAT5E Shielded, Plenum, With Boots
CP662(A)WB(XXX)(B)	CAT6 Non-Shielded, Plenum, With Boots
CP6S2(A)WB(XXX)(B)	CAT6 Shielded, Plenum, With Boots
CP6A2(A)WB(XXX)(B)	CAT6A Non-Shielded, Plenum, With Boots
CPSA2(A)WB(XXX)(B)	CAT6A Shielded, Plenum, With Boots

CAT Patch Cords, ORDERING INFORMATION

PLENUM	
Part # (No Boots)	Description
CP5E2(A)NB(XXX)(B)	CAT5E Non-Shielded, Plenum, No Boots
CP5S2(A)NB(XXX)(B)	CAT5E Shielded, Plenum, No Boots
CP662(A)NB(XXX)(B)	CAT6 Non-Shielded, Plenum, No Boots
CP6S2(A)NB(XXX)(B)	CAT6 Shielded, Plenum, No Boots
CP6A2(A)NB(XXX)(B)	CAT6A Non-Shielded, Plenum, No Boots
CPSA2(A)NB(XXX)(B)	CAT6A Shielded, Plenum, No Boots

NON-RATED	
Part # (With Boots)	Description
CP5E9(A)WB(XXX)(B)	CAT5E Non-Shielded, Non-Rated, With Boots
CP5S9(A)WB(XXX)(B)	CAT5E Shielded, Non-Rated, With Boots
CP669(A)WB(XXX)(B)	CAT6 Non-Shielded, Non-Rated, With Boots
CP6S9(A)WB(XXX)(B)	CAT6 Shielded, Non-Rated, With Boots
CP6A9(A)WB(XXX)(B)	CAT6A Non-Shielded, Non-Rated, With Boots
CPSA9(A)WB(XXX)(B)	CAT6A Shielded, Non-Rated, With Boots

NON-RATED	
Part # (No Boots)	Description
CP5E9(A)NB(XXX)(B)	CAT5E Non-Shielded, Non-Rated, No Boots
CP5S9(A)NB(XXX)(B)	CAT5E Shielded, Non-Rated, No Boots
CP669(A)NB(XXX)(B)	CAT6 Non-Shielded, Non-Rated, No Boots
CP6S9(A)NB(XXX)(B)	CAT6 Shielded, Non-Rated, No Boots
CP6A9(A)NB(XXX)(B)	CAT6A Non-Shielded, Non-Rated, No Boots
CPSA9(A)NB(XXX)(B)	CAT6A Shielded, Non-Rated, No Boots