

Keyed LC and MTRJ Jumpers

DMSI offers 12 uniquely keyed and colored LC and MTRJ connector options, and 10 unique MTP options for physical secure network requirements. Keyed products are available in jumpers, trunk cables, harnesses, adapter panels, modules, and work area outlet inserts.

ORDERING INFORMATION

(X)(AA)(BB)002(C)2(D)2(EEE)(F)

(X) Select Connector Manufacturer

S Commscope/TE brand
 C Corning brand
 D DMSI brand

use keyed connector number first

(AA)&(BB) Select Connectors

31 LC Duplex
 32 LC 2.0mm Simplex
 44 MTRJ Non-Pinned
 47 MTRJ Pinned
 61 SC duplex
 67 ST
 3X* Keyed LC Duplex
 4X* Keyed MTRJ Non-Pinned

(X*) Select Keyed Color Option

B Blue
 N Orange
 G Green
 W Brown
 T Slate
 H White
 R Red
 K Black
 Y Yellow
 V Violet
 S Rose
 A Aqua
 L Lime Green

002 - Standard for 2 fiber duplex

(C) Select Fiber Type

Y OS2 10mm bend (standard)
 F OM1
 E OM2
 G OM3
 M OM4
 W OM5 (WBMMF)

2 - Standard plenum jacket

(D) Select Jacket Color

B Blue
 N Orange
 G Green
 W Brown
 T Slate
 H White
 R Red
 K Black
 Y Yellow
 V Violet
 S Rose
 A Aqua
 L Lime Green

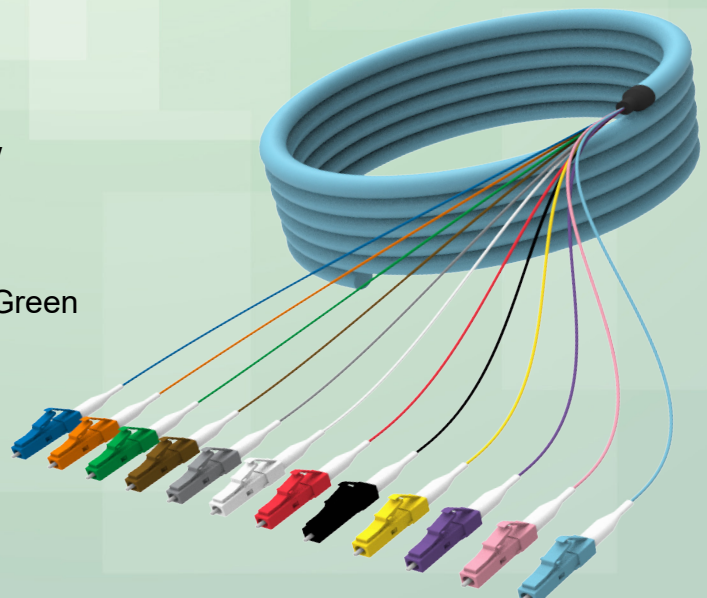
2 - Standard plenum jacket

(EEE) Select Length

001-999

(F) Select Unit of Measure

F Feet
 M Meter
 N Inches



SINGLE-MODE

The standard single-mode offering is a 10mm OS2 bend insensitive fiber. Bend performances of 7.5mm and 5.0mm are also available.

COMPLIANCES

ICEA S-83-596	UL1666
TIA492-CAAB G.652.D	TIA-568-C.3

NUMERICAL APERTURE

.14 (*characterized*)

AVAILABLE FIBER TYPES

G.657.A1 10mm bend
(standard offering for OMNIA and IllumiCore)

G.657.A2/B2	7.5mm bend
G.657.B3	5.0mm bend

MULTIMODE 62.5µm OM1

COMPLIANCES

ICEA S-83-596	TIA492-AAAA-A	TIA-568-C.3
ISO/IEC 11801 Type OM1	IEC 60793-10	UL1666

NUMERICAL APERTURE

.275 ± 0.015

AVAILABLE FIBER TYPES

62.5µm OM1
(standard offering for OMNIA and IllumiCore)

MULTIMODE 50µm OM2, OM3, OM4, and OM5

Each of the 50-micron options are a bend-insensitive fiber. Cable jackets are colored for easy bandwidth performance identification: OM2 orange, OM3/4 aqua, and OM5 lime. Custom colors are always available.

COMPLIANCES

ICEA S-83-596	TIA492-AAC-B (OM3)	TIA-568-C.3
TIA492-AAAB-A (OM2)	TIA492-AAAD (OM4)	TIA492-AAAE (OM5)
UL1666		

AVAILABLE FIBER TYPES AND RATINGS

OM2	OM4
OM3	OM5

NUMERICAL APERTURE

.20 ± 0.015

Connector Performance Specifications

	Typical IL Performance	Max IL Performance	Typical Reflectance (dB)
Single-mode LC	0.13	0.20	-57
Single-mode ST	0.14	0.20	-56
Single-mode FC	0.16	0.20	-57
Single-mode SC	0.25	0.20	-57
Single-mode MTRJ Pinned	0.25	0.50	-51
Single-mode MTRJ Non-Pinned	0.17	0.50	-51
Multimode LC	0.17	0.20	
Multimode ST	0.10	0.20	
Multimode FC	0.10	0.20	
Multimode SC	0.12	0.20	
Multimode MTRJ Pinned	0.20	0.50	
Multimode MTRJ Non-pinned	0.20	0.50	

SINGLE AND DUAL FIBER CONNECTOR COMPLIANCES

LC Connectors	TIA/EIA-604-10
SC Connectors	TIA/EIA-604-3
ST Connectors	TIA/EIA-604-2
FC Connectors	TIA/EIA-604-4
MTRJ Connectors	TIA/EIA-604-12