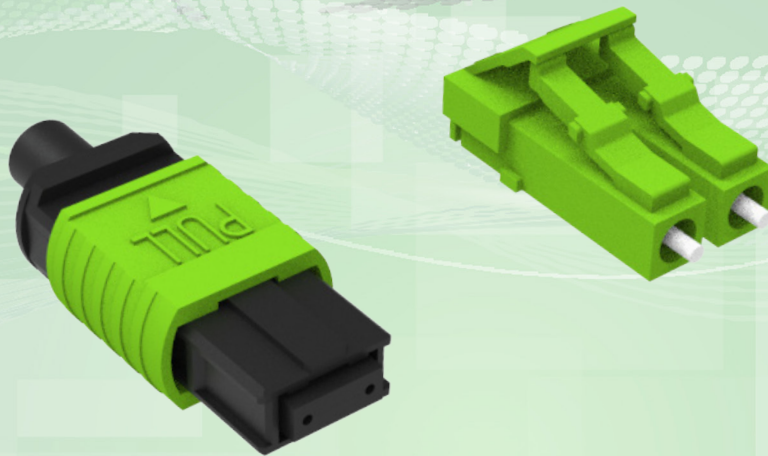


## Fiber Optic Connectors

Anaerobic connectors are available for factory or field termination applications. They use a two-part epoxy and require a polish. Available connector types include LC, SC, ST, and FC. Each connector is individually bagged with body and ferrule, crimps, and multiple sized boots.



### COMPLIANCES

LC Connectors  
SC Connectors  
ST Connectors  
FC Connectors

TIA/EIA-604-10  
TIA/EIA-604-3  
TIA/EIA-604-2  
TIA/EIA-604-4

### FC CONNECTORS

EPC-Y21-S	FC Connector, UPC, Single-mode OS2, ceramic ferrule & metal body, includes 900µm and 2.0mm blue boot
EPC-Y28-S	FC Connector, APC, Single-mode OS2, ceramic ferrule & metal body, includes 900µm and 2.0mm green boot
EPC-F21-S	FC Connector, UPC, 62.5µm multimode OM1, ceramic ferrule & metal body, in-cludes 900µm and 2.0mm beige boot
EPC-E21-S	FC Connector, UPC, 50µm multimode OM2, ceramic ferrule & metal body, includes 900µm and 2.0mm black boot
EPC-G21-S	FC Connector, UPC, 50µm multimode OM3/4, ceramic ferrule & metal body, in-cludes 900µm and 2.0mm aqua boot

## LC CONNECTORS

EPC-Y31-S	LC Connector, UPC, Single-mode OS2, ceramic ferrule, blue body, includes 900µm and 2.0mm blue boot
EPC-Y38-S	LC Connector, APC, Single-mode OS2, ceramic ferrule, green body, includes 900µm and 2.0mm green boot
EPC-F31-S	LC Connector, UPC, 62.5µm multimode OM1, ceramic ferrule, beige body, includes 900µm and 2.0mm beige boot
EPC-E31-S	LC Connector, UPC, 50µm multimode OM2, ceramic ferrule, black body, includes 900µm and 2.0mm black boot
EPC-G31-S	LC Connector, UPC, 50µm multimode OM3/4, ceramic ferrule, aqua body, includes 900µm and 2.0mm aqua boot

## ST CONNECTORS

EPC-Y67-S	ST Connector, UPC, Single-mode OS2, ceramic ferrule & metal body, includes 900µm and 2.0mm blue boot
EPC-F67-S	ST Connector, UPC, 62.5µm multimode OM1, ceramic ferrule & metal body, includes 900µm and 2.0mm beige boot
EPC-E67-S	ST Connector, UPC, 50µm multimode OM2, ceramic ferrule & metal body, includes 900µm and 2.0mm black boot
EPC-G67-S	ST Connector, UPC, 50µm multimode OM3/4, ceramic ferrule & metal body, includes 900µm and 2.0mm aqua boot
EPC-G61-S	SC Connector, UPC, 50µm multimode OM3/4, ceramic ferrule, aqua body, includes 900µm and 2.0mm aqua boot

## SC CONNECTORS

EPC-Y61-S	SC Connector, UPC, Single-mode OS2, ceramic ferrule, blue body, includes 900µm and 2.0mm blue boot
EPC-Y68-S	SC Connector, APC, Single-mode OS2, ceramic ferrule, green body, includes 900µm and 2.0mm green boot
EPC-F61-S	SC Connector, UPC, 62.5µm multimode OM1, ceramic ferrule, beige body, includes 900µm and 2.0mm beige boot
EPC-E61-S	SC Connector, UPC, 50µm multimode OM2, ceramic ferrule, black body, includes 900µm and 2.0mm black boot
EPC-G61-S	SC Connector, UPC, 50µm multimode OM3/4, ceramic ferrule, aqua body, includes 900µm and 2.0mm aqua boot